

Horn 1 in F

1. Sinfonie
(1986)

Friedrich Radermacher

Allegro

f *mf* *rit.* *a tempo* *p* *fp* *p* *p espr* *p* *mf* *mf* *poco rit.* *tempo* *pp*

7 *a 2*

11

15

22

29

36

43

48

53

3 **3**

62 1. marcato
p *p*

69 a2
p *ff*

75

81 *pp* **B** 2 gestopft
pp

89 2
pp

96 *p* *mf cresc.*

101 *ff* 2 *pp*

108 *p* *ff*

114 4 *pp*

124 *mf* *p*

132 *rit.* *a tempo* *poco rit.* *pp*

143 *f* *mf* *a tempo*

148 *f* *sfz*

154 *mf* *ff*

160

167 *p* *mute*

173 *ff*

182

2. Satz

Poco adagio

$\text{♩} = 68$

7 *pp* *1. mute*

202 *pp* *open* *pp*

215 **5** **F** **5** *pp* *mf* *f*

229 *p* *pp*

236 **6** open **G** **Più mosso** **2** *pp* *p* *p*

250 **2** 1. *p*

256 **3** *pp*

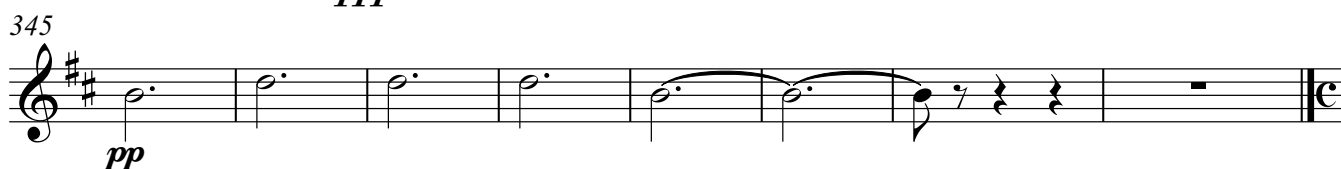
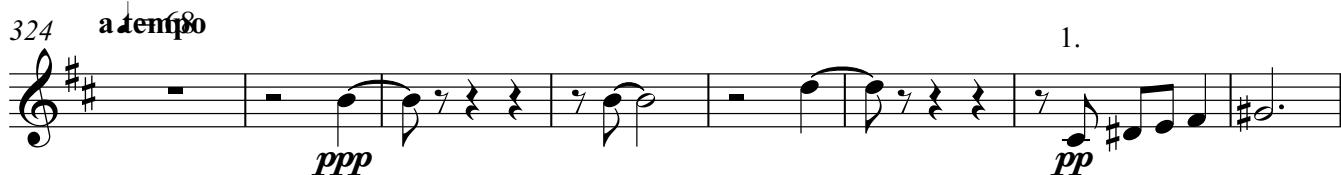
264 **H** 1. *mf* **7** *pp*

276 **2** a2 *f*

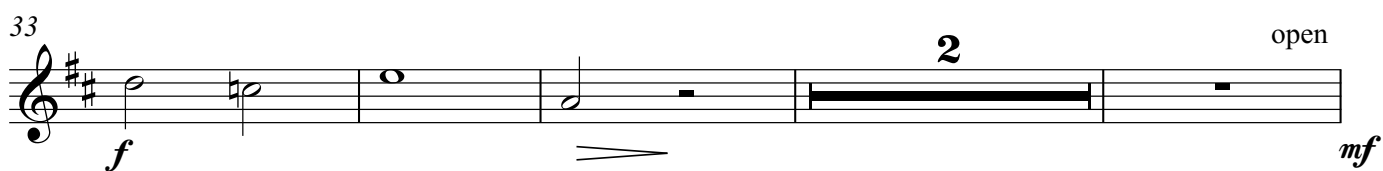
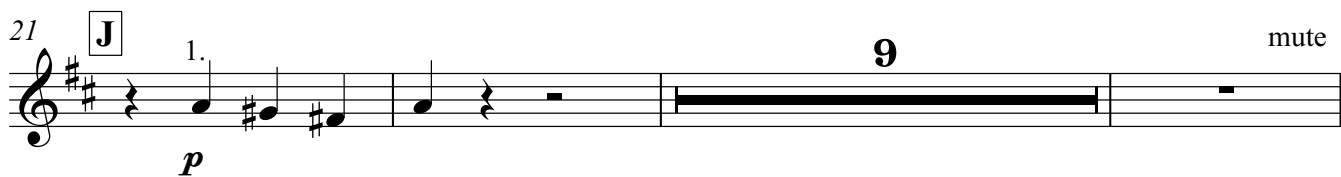
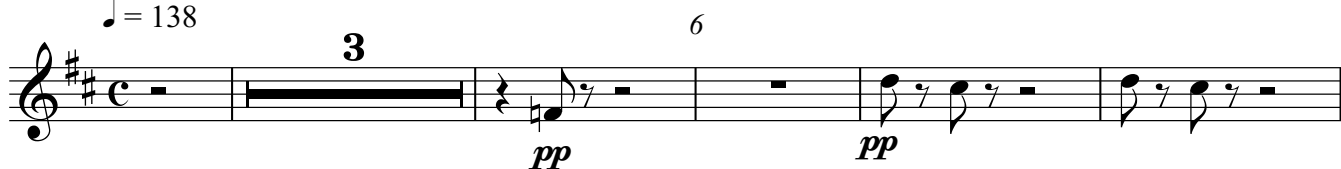
284 1. *p* *mf* *mfp*

292 *pp* *marcato* rit. **2**

302 **I** **Tempo 1** **2** *p* *pp*

**Allegro moderato**

♩ = 138



39

45

52

57

70

75

85

95

106

118

ff *pp* *p* *pp* *mf* *ff* *pp* *mp* *p* *mf*

K **L** **M**

9 **5** **6** **3** **5** **11**

a2

132 *p* *f*

137 *sfz* *mute* **2**

142 **N** **3** *open* *pp* *pp*

150 *pp* **3** *open*

158 *f* *ppp*

164 **6** *mf* *f*

174 *ff* *ff* *rit.* **3**

4. Satz

Adagio

♩ = 72

19 *rit.* *a tempo* **3** *pp*

207 **2**

213 **4** *pp* **7**

227 *pp* **3** *pp*

235 *rit.* **6** *mute* **2.** *ppp perdendosi*

5. Satz

Allegro con brio

14 *f* **8**

24 *sfz* *f* **4** *mute*

29 **O** **13** *open* *mf*

46 *f* *p*

52 **P** **3** *1. solo* *p*

59 **3** *p* **2**

68 *a2* *f* *1. espr.* *p* *a2*

73

73-77: Musical staff with treble clef and key signature of two sharps (F# and C#). It contains a melodic line with various note values and rests. Dynamics include *mf* and *p*. A crescendo hairpin is present towards the end of the staff.

78

78-82: Musical staff with treble clef and key signature of two sharps. It features a 6-measure rest, a box labeled 'Q', a 4-measure rest, and then a melodic line. Dynamics include *p*.

91

91-96: Musical staff with treble clef and key signature of two sharps. It contains a melodic line with various note values and rests. Dynamics include *p*. A first ending bracket labeled '1.' is present.

97

97-105: Musical staff with treble clef and key signature of two sharps. It features a 2-measure rest, a first ending bracket labeled '1.', and then a melodic line. Dynamics include *p*. A crescendo hairpin is present before the 2-measure rest.

106

106-118: Musical staff with treble clef and key signature of two sharps. It features an 8-measure rest, a box labeled 'R', and then a melodic line. Dynamics include *mf*, *sfz*, and *ff*. The word 'mute' is written above the staff at the end.

119

119-126: Musical staff with treble clef and key signature of two sharps. It contains a melodic line with various note values and rests. Dynamics include *p*, *pp*, and *p*. A crescendo hairpin is present.

127

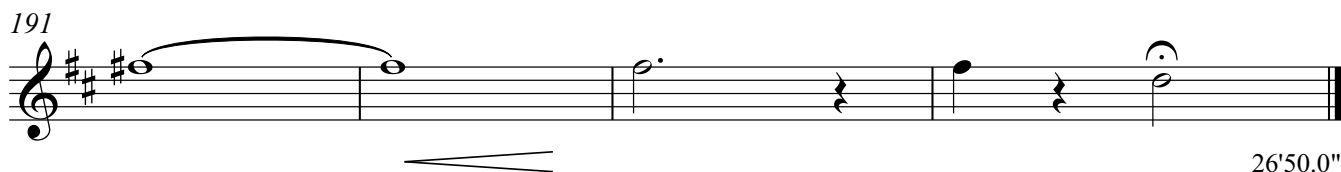
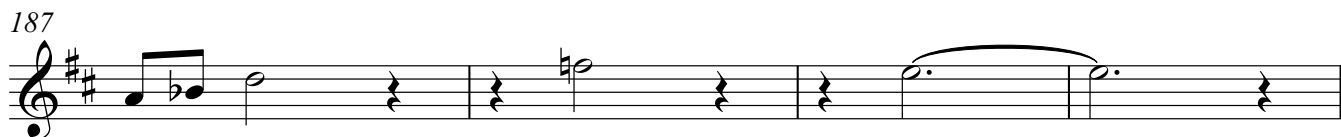
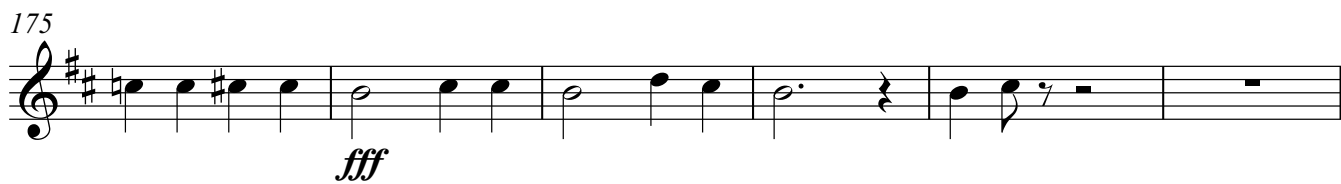
127-147: Musical staff with treble clef and key signature of two sharps. It features a 3-measure rest, a box labeled 'S', a 15-measure rest, and then a melodic line. Dynamics include *mf*. The word 'open' is written above the staff.

148

148-155: Musical staff with treble clef and key signature of two sharps. It contains a melodic line with various note values and rests. Dynamics include *f*. A 3-measure rest is present.

156

156-163: Musical staff with treble clef and key signature of two sharps. It contains a melodic line with various note values and rests. Dynamics include *ff*. A 3-measure rest is present.



26'50.0"